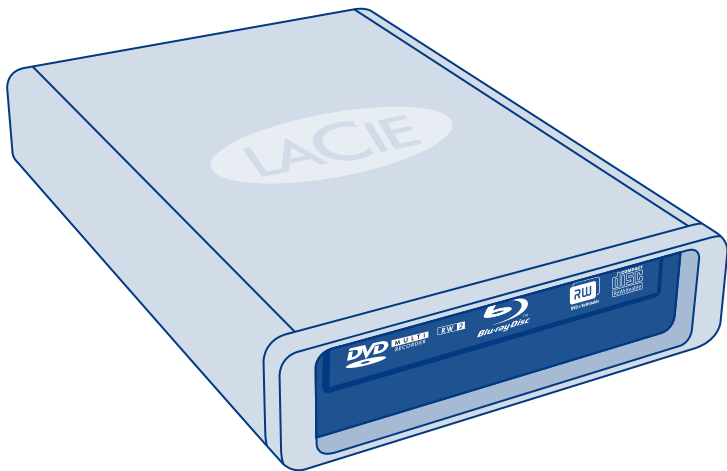




LaCie d2 Blu-ray Drive

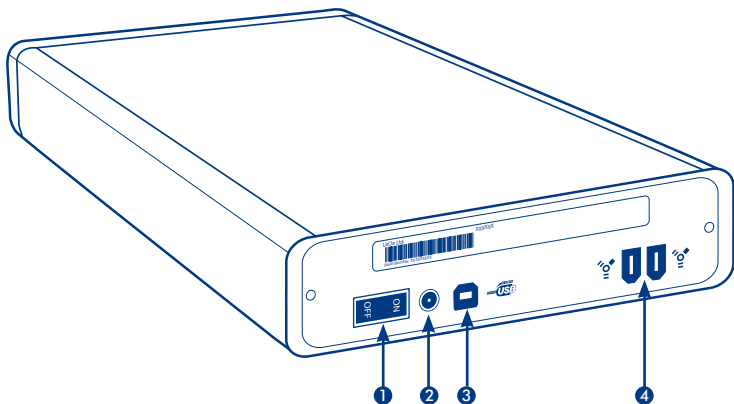
USB 2.0, FireWire 400 & FireWire 800



Quick Install Guide

PACKAGE CONTENT

- LaCie d2 Blu-ray Drive
- Power supply
- Hi-Speed USB 2.0 cable
- FireWire 400 cable
- FireWire 400 to 800 adapter cable
- LaCie Utilities DVD-ROM



1. POWER SWITCH

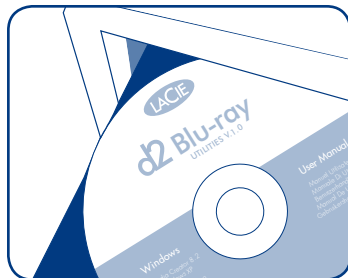
2. POWER CONNECTION

3. USB 2.0 PORT

4. FIREWIRE 400 PORTS

Setup Steps

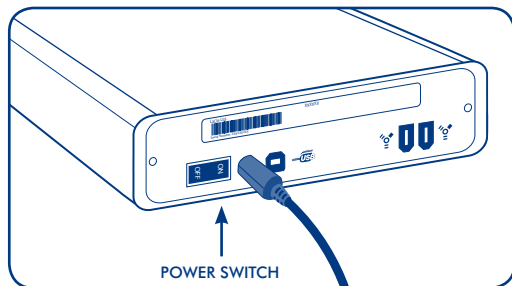
1. Install the included software. (See User Manual for software description.)



Note:

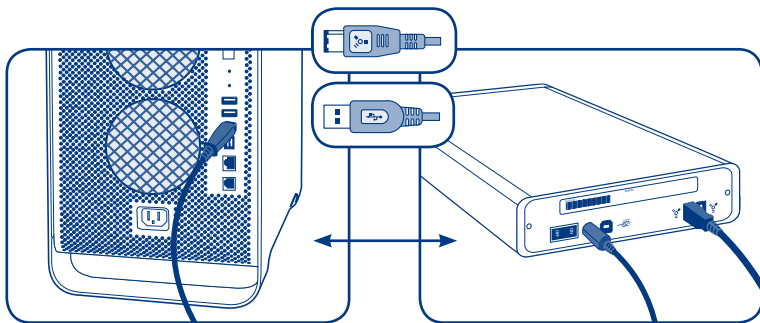
Manuals for the LaCie d2 Blu-ray Drive and each of the included software are separated. Always retain your original LaCie Utilities DVD-ROM.

2. Connect the power supply and turn on the drive.



3. Connect one of the interface cables; either:

- Connect the USB 2.0 cable to the drive and to the computer.
- Connect the FireWire 400 cable to the drive and to the computer.
- Connect the FireWire 400 end of the adapter cable to the drive and the FireWire 800 end to the corresponding port on the computer.



Protect your investment – register for free technical support:
www.lacie.com/register

Precautions

Do not stack more than 3 LaCie Blu-ray Drives together. Do not expose the drive to temperatures over 35° C (95° F) or 30° C (86° F) when stacked. Do not expose the device to liquids. Use only the power supply shipped with the device.

Warranty Information

LaCie warrants your product against any defect in material and workmanship, under normal use, for the designated warranty period. The warranty becomes effective from the date of shipment. In the event this product is found to be defective within the warranty period, LaCie will, at its discretion, repair or replace the defective product.

This warranty is void if:

- The product was operated/stored in abnormal use or maintenance conditions;
- The product is repaired, modified or altered, unless LaCie expressly authorizes such repair, modification or alteration in writing;
- The product was subjected to abuse, neglect, electrical fault, improper packaging, accident or acts of nature;
- The product was installed improperly;
- The serial number of the product is defaced or missing;
- The broken part is a replacement part such as a pickup tray, etc.
- The tamper seal on the casing is broken.

See the User Manual (located on the Utilities DVD-ROM) for more information.

For the latest documentation and software updates, please visit:
<http://www.lacie.com/us/support/drivers/index.htm?id=10008>



Setting up the LaCie d2 Blu-ray Drive

1. Install the included software. (See *User Manual* for software description.)

NOTE :

Manuals for the LaCie d2 Blu-ray Drive and each of the included software are separated. Always retain your original LaCie Utilities DVD-ROM.

2. Connect the power supply and turn on the drive.

3. Connect one of the interface cables; either:

- Connect the USB 2.0 cable to the drive and to the computer.
- Connect the FireWire 400 cable to the drive and to the computer.
- Connect the FireWire 400 end of the adapter cable to the drive and the FireWire 800 end to the corresponding port on the computer.

Protect your investment – register for free technical support: www.lacie.com/register

Precautions

Do not stack more than 3 LaCie Blu-ray Drives together. Do not expose the drive to temperatures over 35° C (95° F) or 30° C (86° F) when stacked. Do not expose the device to liquids. Use only the power supply shipped with the device.

Warranty Information

LaCie warrants your product against any defect in material and workmanship, under normal use, for the designated warranty period. The warranty becomes effective from the date of shipment. In the event this product is found to be defective within the warranty period, LaCie will, at its discretion, repair or replace the defective product.

This warranty is void if:

- The product was operated/stored in abnormal use or maintenance conditions;
- The product is repaired, modified or altered, unless LaCie expressly authorizes such repair, modification or alteration in writing;
- The product was subjected to abuse, neglect, electrical fault, improper packaging, accident or acts of nature;
- The product was installed improperly;
- The serial number of the product is defaced or missing;
- The broken part is a replacement part such as a pickup tray, etc.
- The tamper seal on the casing is broken.

See the User Manual (located on the Utilities DVD-ROM) for more information.

For the latest documentation and software updates, please visit:
<http://www.lacie.com/us/support/drivers/index.htm?id=10008>



Setting up the LaCie d2 Blu-ray Drive

1. Install the included software. (See *User Manual* for software description.)

NOTE :

Manuals for the LaCie d2 Blu-ray Drive and each of the included software are separated. Always retain your original LaCie Utilities DVD-ROM.

2. Connect the power supply and turn on the drive.

3. Connect one of the interface cables; either:

- Connect the USB 2.0 cable to the drive and to the computer.
- Connect the FireWire 400 cable to the drive and to the computer.
- Connect the FireWire 400 end of the adapter cable to the drive and the FireWire 800 end to the corresponding port on the computer.

Protect your investment – register for free technical support: www.lacie.com/register

Precautions

Do not stack more than 3 LaCie Blu-ray Drives together. Do not expose the drive to temperatures over 35° C (95° F) or 30° C (86° F) when stacked. Do not expose the device to liquids. Use only the power supply shipped with the device.

Warranty Information

LaCie warrants your product against any defect in material and workmanship, under normal use, for the designated warranty period. The warranty becomes effective from the date of shipment. In the event this product is found to be defective within the warranty period, LaCie will, at its discretion, repair or replace the defective product.

This warranty is void if:

- The product was operated/stored in abnormal use or maintenance conditions;
- The product is repaired, modified or altered, unless LaCie expressly authorizes such repair, modification or alteration in writing;
- The product was subjected to abuse, neglect, electrical fault, improper packaging, accident or acts of nature;
- The product was installed improperly;
- The serial number of the product is defaced or missing;
- The broken part is a replacement part such as a pickup tray, etc.
- The tamper seal on the casing is broken.

See the User Manual (located on the Utilities DVD-ROM) for more information.

For the latest documentation and software updates, please visit:
<http://www.lacie.com/us/support/drivers/index.htm?id=10008>



Setting up the LaCie d2 Blu-ray Drive

1. Install the included software. (See *User Manual* for software description.)

NOTE :

Manuals for the LaCie d2 Blu-ray Drive and each of the included software are separated. Always retain your original LaCie Utilities DVD-ROM.

2. Connect the power supply and turn on the drive.

3. Connect one of the interface cables; either:

- Connect the USB 2.0 cable to the drive and to the computer.
- Connect the FireWire 400 cable to the drive and to the computer.
- Connect the FireWire 400 end of the adapter cable to the drive and the FireWire 800 end to the corresponding port on the computer.

Protect your investment – register for free technical support: www.lacie.com/register

Precautions

Do not stack more than 3 LaCie Blu-ray Drives together. Do not expose the drive to temperatures over 35° C (95° F) or 30° C (86° F) when stacked. Do not expose the device to liquids. Use only the power supply shipped with the device.

Warranty Information

LaCie warrants your product against any defect in material and workmanship, under normal use, for the designated warranty period. The warranty becomes effective from the date of shipment. In the event this product is found to be defective within the warranty period, LaCie will, at its discretion, repair or replace the defective product.

This warranty is void if:

- The product was operated/stored in abnormal use or maintenance conditions;
- The product is repaired, modified or altered, unless LaCie expressly authorizes such repair, modification or alteration in writing;
- The product was subjected to abuse, neglect, electrical fault, improper packaging, accident or acts of nature;
- The product was installed improperly;
- The serial number of the product is defaced or missing;
- The broken part is a replacement part such as a pickup tray, etc.
- The tamper seal on the casing is broken.

See the User Manual (located on the Utilities DVD-ROM) for more information.

For the latest documentation and software updates, please visit:
<http://www.lacie.com/us/support/drivers/index.htm?id=10008>



Setting up the LaCie d2 Blu-ray Drive

1. Install the included software. (See *User Manual* for software description.)

NOTE :

Manuals for the LaCie d2 Blu-ray Drive and each of the included software are separated. Always retain your original LaCie Utilities DVD-ROM.

2. Connect the power supply and turn on the drive.

3. Connect one of the interface cables; either:

- Connect the USB 2.0 cable to the drive and to the computer.
- Connect the FireWire 400 cable to the drive and to the computer.
- Connect the FireWire 400 end of the adapter cable to the drive and the FireWire 800 end to the corresponding port on the computer.

Protect your investment – register for free technical support: www.lacie.com/register

Precautions

Do not stack more than 3 LaCie Blu-ray Drives together. Do not expose the drive to temperatures over 35° C (95° F) or 30° C (86° F) when stacked. Do not expose the device to liquids. Use only the power supply shipped with the device.

Warranty Information

LaCie warrants your product against any defect in material and workmanship, under normal use, for the designated warranty period. The warranty becomes effective from the date of shipment. In the event this product is found to be defective within the warranty period, LaCie will, at its discretion, repair or replace the defective product.

This warranty is void if:

- The product was operated/stored in abnormal use or maintenance conditions;
- The product is repaired, modified or altered, unless LaCie expressly authorizes such repair, modification or alteration in writing;
- The product was subjected to abuse, neglect, electrical fault, improper packaging, accident or acts of nature;
- The product was installed improperly;
- The serial number of the product is defaced or missing;
- The broken part is a replacement part such as a pickup tray, etc.
- The tamper seal on the casing is broken.

See the User Manual (located on the Utilities DVD-ROM) for more information.

For the latest documentation and software updates, please visit:
<http://www.lacie.com/us/support/drivers/index.htm?id=10008>



Setting up the LaCie d2 Blu-ray Drive

1. Install the included software. (See *User Manual* for software description.)

NOTE :

Manuals for the LaCie d2 Blu-ray Drive and each of the included software are separated. Always retain your original LaCie Utilities DVD-ROM.

2. Connect the power supply and turn on the drive.

3. Connect one of the interface cables; either:

- Connect the USB 2.0 cable to the drive and to the computer.
- Connect the FireWire 400 cable to the drive and to the computer.
- Connect the FireWire 400 end of the adapter cable to the drive and the FireWire 800 end to the corresponding port on the computer.

Protect your investment – register for free technical support: www.lacie.com/register

Precautions

Do not stack more than 3 LaCie Blu-ray Drives together. Do not expose the drive to temperatures over 35° C (95° F) or 30° C (86° F) when stacked. Do not expose the device to liquids. Use only the power supply shipped with the device.

Warranty Information

LaCie warrants your product against any defect in material and workmanship, under normal use, for the designated warranty period. The warranty becomes effective from the date of shipment. In the event this product is found to be defective within the warranty period, LaCie will, at its discretion, repair or replace the defective product.

This warranty is void if:

- The product was operated/stored in abnormal use or maintenance conditions;
- The product is repaired, modified or altered, unless LaCie expressly authorizes such repair, modification or alteration in writing;
- The product was subjected to abuse, neglect, electrical fault, improper packaging, accident or acts of nature;
- The product was installed improperly;
- The serial number of the product is defaced or missing;
- The broken part is a replacement part such as a pickup tray, etc.
- The tamper seal on the casing is broken.

See the User Manual (located on the Utilities DVD-ROM) for more information.

For the latest documentation and software updates, please visit:
<http://www.lacie.com/us/support/drivers/index.htm?id=10008>



Setting up the LaCie d2 Blu-ray Drive

1. Install the included software. (See *User Manual* for software description.)

NOTE :

Manuals for the LaCie d2 Blu-ray Drive and each of the included software are separated. Always retain your original LaCie Utilities DVD-ROM.

2. Connect the power supply and turn on the drive.

3. Connect one of the interface cables; either:

- Connect the USB 2.0 cable to the drive and to the computer.
- Connect the FireWire 400 cable to the drive and to the computer.
- Connect the FireWire 400 end of the adapter cable to the drive and the FireWire 800 end to the corresponding port on the computer.

Protect your investment – register for free technical support: www.lacie.com/register

Precautions

Do not stack more than 3 LaCie Blu-ray Drives together. Do not expose the drive to temperatures over 35° C (95° F) or 30° C (86° F) when stacked. Do not expose the device to liquids. Use only the power supply shipped with the device.

Warranty Information

LaCie warrants your product against any defect in material and workmanship, under normal use, for the designated warranty period. The warranty becomes effective from the date of shipment. In the event this product is found to be defective within the warranty period, LaCie will, at its discretion, repair or replace the defective product.

This warranty is void if:

- The product was operated/stored in abnormal use or maintenance conditions;
- The product is repaired, modified or altered, unless LaCie expressly authorizes such repair, modification or alteration in writing;
- The product was subjected to abuse, neglect, electrical fault, improper packaging, accident or acts of nature;
- The product was installed improperly;
- The serial number of the product is defaced or missing;
- The broken part is a replacement part such as a pickup tray, etc.
- The tamper seal on the casing is broken.

See the User Manual (located on the Utilities DVD-ROM) for more information.

For the latest documentation and software updates, please visit:
<http://www.lacie.com/us/support/drivers/index.htm?id=10008>



Setting up the LaCie d2 Blu-ray Drive

1. Install the included software. (See *User Manual* for software description.)

NOTE :

Manuals for the LaCie d2 Blu-ray Drive and each of the included software are separated. Always retain your original LaCie Utilities DVD-ROM.

2. Connect the power supply and turn on the drive.

3. Connect one of the interface cables; either:

- Connect the USB 2.0 cable to the drive and to the computer.
- Connect the FireWire 400 cable to the drive and to the computer.
- Connect the FireWire 400 end of the adapter cable to the drive and the FireWire 800 end to the corresponding port on the computer.

Protect your investment – register for free technical support: www.lacie.com/register

Precautions

Do not stack more than 3 LaCie Blu-ray Drives together. Do not expose the drive to temperatures over 35° C (95° F) or 30° C (86° F) when stacked. Do not expose the device to liquids. Use only the power supply shipped with the device.

Warranty Information

LaCie warrants your product against any defect in material and workmanship, under normal use, for the designated warranty period. The warranty becomes effective from the date of shipment. In the event this product is found to be defective within the warranty period, LaCie will, at its discretion, repair or replace the defective product.

This warranty is void if:

- The product was operated/stored in abnormal use or maintenance conditions;
- The product is repaired, modified or altered, unless LaCie expressly authorizes such repair, modification or alteration in writing;
- The product was subjected to abuse, neglect, electrical fault, improper packaging, accident or acts of nature;
- The product was installed improperly;
- The serial number of the product is defaced or missing;
- The broken part is a replacement part such as a pickup tray, etc.
- The tamper seal on the casing is broken.

See the User Manual (located on the Utilities DVD-ROM) for more information.

For the latest documentation and software updates, please visit:
<http://www.lacie.com/us/support/drivers/index.htm?id=10008>



Setting up the LaCie d2 Blu-ray Drive

1. Install the included software. (See *User Manual* for software description.)

NOTE :

Manuals for the LaCie d2 Blu-ray Drive and each of the included software are separated. Always retain your original LaCie Utilities DVD-ROM.

2. Connect the power supply and turn on the drive.

3. Connect one of the interface cables; either:

- Connect the USB 2.0 cable to the drive and to the computer.
- Connect the FireWire 400 cable to the drive and to the computer.
- Connect the FireWire 400 end of the adapter cable to the drive and the FireWire 800 end to the corresponding port on the computer.

Protect your investment – register for free technical support: www.lacie.com/register

Precautions

Do not stack more than 3 LaCie Blu-ray Drives together. Do not expose the drive to temperatures over 35° C (95° F) or 30° C (86° F) when stacked. Do not expose the device to liquids. Use only the power supply shipped with the device.

Warranty Information

LaCie warrants your product against any defect in material and workmanship, under normal use, for the designated warranty period. The warranty becomes effective from the date of shipment. In the event this product is found to be defective within the warranty period, LaCie will, at its discretion, repair or replace the defective product.

This warranty is void if:

- The product was operated/stored in abnormal use or maintenance conditions;
- The product is repaired, modified or altered, unless LaCie expressly authorizes such repair, modification or alteration in writing;
- The product was subjected to abuse, neglect, electrical fault, improper packaging, accident or acts of nature;
- The product was installed improperly;
- The serial number of the product is defaced or missing;
- The broken part is a replacement part such as a pickup tray, etc.
- The tamper seal on the casing is broken.

See the User Manual (located on the Utilities DVD-ROM) for more information.

For the latest documentation and software updates, please visit:
<http://www.lacie.com/us/support/drivers/index.htm?id=10008>



Setting up the LaCie d2 Blu-ray Drive

1. Install the included software. (See *User Manual* for software description.)

NOTE :

Manuals for the LaCie d2 Blu-ray Drive and each of the included software are separated. Always retain your original LaCie Utilities DVD-ROM.

2. Connect the power supply and turn on the drive.

3. Connect one of the interface cables; either:

- Connect the USB 2.0 cable to the drive and to the computer.
- Connect the FireWire 400 cable to the drive and to the computer.
- Connect the FireWire 400 end of the adapter cable to the drive and the FireWire 800 end to the corresponding port on the computer.

Protect your investment – register for free technical support: www.lacie.com/register

Precautions

Do not stack more than 3 LaCie Blu-ray Drives together. Do not expose the drive to temperatures over 35° C (95° F) or 30° C (86° F) when stacked. Do not expose the device to liquids. Use only the power supply shipped with the device.

Warranty Information

LaCie warrants your product against any defect in material and workmanship, under normal use, for the designated warranty period. The warranty becomes effective from the date of shipment. In the event this product is found to be defective within the warranty period, LaCie will, at its discretion, repair or replace the defective product.

This warranty is void if:

- The product was operated/stored in abnormal use or maintenance conditions;
- The product is repaired, modified or altered, unless LaCie expressly authorizes such repair, modification or alteration in writing;
- The product was subjected to abuse, neglect, electrical fault, improper packaging, accident or acts of nature;
- The product was installed improperly;
- The serial number of the product is defaced or missing;
- The broken part is a replacement part such as a pickup tray, etc.
- The tamper seal on the casing is broken.

See the User Manual (located on the Utilities DVD-ROM) for more information.

For the latest documentation and software updates, please visit:
<http://www.lacie.com/us/support/drivers/index.htm?id=10008>



Setting up the LaCie d2 Blu-ray Drive

1. Install the included software. (See *User Manual* for software description.)

NOTE :

Manuals for the LaCie d2 Blu-ray Drive and each of the included software are separated. Always retain your original LaCie Utilities DVD-ROM.

2. Connect the power supply and turn on the drive.

3. Connect one of the interface cables; either:

- Connect the USB 2.0 cable to the drive and to the computer.
- Connect the FireWire 400 cable to the drive and to the computer.
- Connect the FireWire 400 end of the adapter cable to the drive and the FireWire 800 end to the corresponding port on the computer.

Protect your investment – register for free technical support: www.lacie.com/register

Precautions

Do not stack more than 3 LaCie Blu-ray Drives together. Do not expose the drive to temperatures over 35° C (95° F) or 30° C (86° F) when stacked. Do not expose the device to liquids. Use only the power supply shipped with the device.

Warranty Information

LaCie warrants your product against any defect in material and workmanship, under normal use, for the designated warranty period. The warranty becomes effective from the date of shipment. In the event this product is found to be defective within the warranty period, LaCie will, at its discretion, repair or replace the defective product.

This warranty is void if:

- The product was operated/stored in abnormal use or maintenance conditions;
- The product is repaired, modified or altered, unless LaCie expressly authorizes such repair, modification or alteration in writing;
- The product was subjected to abuse, neglect, electrical fault, improper packaging, accident or acts of nature;
- The product was installed improperly;
- The serial number of the product is defaced or missing;
- The broken part is a replacement part such as a pickup tray, etc.
- The tamper seal on the casing is broken.

See the User Manual (located on the Utilities DVD-ROM) for more information.

For the latest documentation and software updates, please visit:
<http://www.lacie.com/us/support/drivers/index.htm?id=10008>



Setting up the LaCie d2 Blu-ray Drive

1. Install the included software. (See *User Manual* for software description.)

NOTE :

Manuals for the LaCie d2 Blu-ray Drive and each of the included software are separated. Always retain your original LaCie Utilities DVD-ROM.

2. Connect the power supply and turn on the drive.

3. Connect one of the interface cables; either:

- Connect the USB 2.0 cable to the drive and to the computer.
- Connect the FireWire 400 cable to the drive and to the computer.
- Connect the FireWire 400 end of the adapter cable to the drive and the FireWire 800 end to the corresponding port on the computer.

Protect your investment – register for free technical support: www.lacie.com/register

Precautions

Do not stack more than 3 LaCie Blu-ray Drives together. Do not expose the drive to temperatures over 35° C (95° F) or 30° C (86° F) when stacked. Do not expose the device to liquids. Use only the power supply shipped with the device.

Warranty Information

LaCie warrants your product against any defect in material and workmanship, under normal use, for the designated warranty period. The warranty becomes effective from the date of shipment. In the event this product is found to be defective within the warranty period, LaCie will, at its discretion, repair or replace the defective product.

This warranty is void if:

- The product was operated/stored in abnormal use or maintenance conditions;
- The product is repaired, modified or altered, unless LaCie expressly authorizes such repair, modification or alteration in writing;
- The product was subjected to abuse, neglect, electrical fault, improper packaging, accident or acts of nature;
- The product was installed improperly;
- The serial number of the product is defaced or missing;
- The broken part is a replacement part such as a pickup tray, etc.
- The tamper seal on the casing is broken.

See the User Manual (located on the Utilities DVD-ROM) for more information.

For the latest documentation and software updates, please visit:
<http://www.lacie.com/us/support/drivers/index.htm?id=10008>



Setting up the LaCie d2 Blu-ray Drive

1. Install the included software. (See *User Manual* for software description.)

NOTE :

Manuals for the LaCie d2 Blu-ray Drive and each of the included software are separated. Always retain your original LaCie Utilities DVD-ROM.

2. Connect the power supply and turn on the drive.

3. Connect one of the interface cables; either:

- Connect the USB 2.0 cable to the drive and to the computer.
- Connect the FireWire 400 cable to the drive and to the computer.
- Connect the FireWire 400 end of the adapter cable to the drive and the FireWire 800 end to the corresponding port on the computer.

Protect your investment – register for free technical support: www.lacie.com/register

Precautions

Do not stack more than 3 LaCie Blu-ray Drives together. Do not expose the drive to temperatures over 35° C (95° F) or 30° C (86° F) when stacked. Do not expose the device to liquids. Use only the power supply shipped with the device.

Warranty Information

LaCie warrants your product against any defect in material and workmanship, under normal use, for the designated warranty period. The warranty becomes effective from the date of shipment. In the event this product is found to be defective within the warranty period, LaCie will, at its discretion, repair or replace the defective product.

This warranty is void if:

- The product was operated/stored in abnormal use or maintenance conditions;
- The product is repaired, modified or altered, unless LaCie expressly authorizes such repair, modification or alteration in writing;
- The product was subjected to abuse, neglect, electrical fault, improper packaging, accident or acts of nature;
- The product was installed improperly;
- The serial number of the product is defaced or missing;
- The broken part is a replacement part such as a pickup tray, etc.
- The tamper seal on the casing is broken.

See the User Manual (located on the Utilities DVD-ROM) for more information.

For the latest documentation and software updates, please visit:
<http://www.lacie.com/us/support/drivers/index.htm?id=10008>



Setting up the LaCie d2 Blu-ray Drive

1. Install the included software. (See *User Manual* for software description.)

NOTE :

Manuals for the LaCie d2 Blu-ray Drive and each of the included software are separated. Always retain your original LaCie Utilities DVD-ROM.

2. Connect the power supply and turn on the drive.

3. Connect one of the interface cables; either:

- Connect the USB 2.0 cable to the drive and to the computer.
- Connect the FireWire 400 cable to the drive and to the computer.
- Connect the FireWire 400 end of the adapter cable to the drive and the FireWire 800 end to the corresponding port on the computer.

Protect your investment – register for free technical support: www.lacie.com/register

Precautions

Do not stack more than 3 LaCie Blu-ray Drives together. Do not expose the drive to temperatures over 35° C (95° F) or 30° C (86° F) when stacked. Do not expose the device to liquids. Use only the power supply shipped with the device.

Warranty Information

LaCie warrants your product against any defect in material and workmanship, under normal use, for the designated warranty period. The warranty becomes effective from the date of shipment. In the event this product is found to be defective within the warranty period, LaCie will, at its discretion, repair or replace the defective product.

This warranty is void if:

- The product was operated/stored in abnormal use or maintenance conditions;
- The product is repaired, modified or altered, unless LaCie expressly authorizes such repair, modification or alteration in writing;
- The product was subjected to abuse, neglect, electrical fault, improper packaging, accident or acts of nature;
- The product was installed improperly;
- The serial number of the product is defaced or missing;
- The broken part is a replacement part such as a pickup tray, etc.
- The tamper seal on the casing is broken.

See the User Manual (located on the Utilities DVD-ROM) for more information.

For the latest documentation and software updates, please visit:
<http://www.lacie.com/us/support/drivers/index.htm?id=10008>



Setting up the LaCie d2 Blu-ray Drive

1. Install the included software. (See *User Manual* for software description.)

NOTE :

Manuals for the LaCie d2 Blu-ray Drive and each of the included software are separated. Always retain your original LaCie Utilities DVD-ROM.

2. Connect the power supply and turn on the drive.

3. Connect one of the interface cables; either:

- Connect the USB 2.0 cable to the drive and to the computer.
- Connect the FireWire 400 cable to the drive and to the computer.
- Connect the FireWire 400 end of the adapter cable to the drive and the FireWire 800 end to the corresponding port on the computer.

Protect your investment – register for free technical support: www.lacie.com/register

Precautions

Do not stack more than 3 LaCie Blu-ray Drives together. Do not expose the drive to temperatures over 35° C (95° F) or 30° C (86° F) when stacked. Do not expose the device to liquids. Use only the power supply shipped with the device.

Warranty Information

LaCie warrants your product against any defect in material and workmanship, under normal use, for the designated warranty period. The warranty becomes effective from the date of shipment. In the event this product is found to be defective within the warranty period, LaCie will, at its discretion, repair or replace the defective product.

This warranty is void if:

- The product was operated/stored in abnormal use or maintenance conditions;
- The product is repaired, modified or altered, unless LaCie expressly authorizes such repair, modification or alteration in writing;
- The product was subjected to abuse, neglect, electrical fault, improper packaging, accident or acts of nature;
- The product was installed improperly;
- The serial number of the product is defaced or missing;
- The broken part is a replacement part such as a pickup tray, etc.
- The tamper seal on the casing is broken.

See the User Manual (located on the Utilities DVD-ROM) for more information.

For the latest documentation and software updates, please visit:
<http://www.lacie.com/us/support/drivers/index.htm?id=10008>



Setting up the LaCie d2 Blu-ray Drive

1. Install the included software. (See *User Manual* for software description.)

NOTE :

Manuals for the LaCie d2 Blu-ray Drive and each of the included software are separated. Always retain your original LaCie Utilities DVD-ROM.

2. Connect the power supply and turn on the drive.

3. Connect one of the interface cables; either:

- Connect the USB 2.0 cable to the drive and to the computer.
- Connect the FireWire 400 cable to the drive and to the computer.
- Connect the FireWire 400 end of the adapter cable to the drive and the FireWire 800 end to the corresponding port on the computer.

Protect your investment – register for free technical support: www.lacie.com/register

Precautions

Do not stack more than 3 LaCie Blu-ray Drives together. Do not expose the drive to temperatures over 35° C (95° F) or 30° C (86° F) when stacked. Do not expose the device to liquids. Use only the power supply shipped with the device.

Warranty Information

LaCie warrants your product against any defect in material and workmanship, under normal use, for the designated warranty period. The warranty becomes effective from the date of shipment. In the event this product is found to be defective within the warranty period, LaCie will, at its discretion, repair or replace the defective product.

This warranty is void if:

- The product was operated/stored in abnormal use or maintenance conditions;
- The product is repaired, modified or altered, unless LaCie expressly authorizes such repair, modification or alteration in writing;
- The product was subjected to abuse, neglect, electrical fault, improper packaging, accident or acts of nature;
- The product was installed improperly;
- The serial number of the product is defaced or missing;
- The broken part is a replacement part such as a pickup tray, etc.
- The tamper seal on the casing is broken.

See the User Manual (located on the Utilities DVD-ROM) for more information.

For the latest documentation and software updates, please visit:
<http://www.lacie.com/us/support/drivers/index.htm?id=10008>



Setting up the LaCie d2 Blu-ray Drive

1. Install the included software. (See *User Manual* for software description.)

NOTE :

Manuals for the LaCie d2 Blu-ray Drive and each of the included software are separated. Always retain your original LaCie Utilities DVD-ROM.

2. Connect the power supply and turn on the drive.

3. Connect one of the interface cables; either:

- Connect the USB 2.0 cable to the drive and to the computer.
- Connect the FireWire 400 cable to the drive and to the computer.
- Connect the FireWire 400 end of the adapter cable to the drive and the FireWire 800 end to the corresponding port on the computer.

Protect your investment – register for free technical support: www.lacie.com/register

Precautions

Do not stack more than 3 LaCie Blu-ray Drives together. Do not expose the drive to temperatures over 35° C (95° F) or 30° C (86° F) when stacked. Do not expose the device to liquids. Use only the power supply shipped with the device.

Warranty Information

LaCie warrants your product against any defect in material and workmanship, under normal use, for the designated warranty period. The warranty becomes effective from the date of shipment. In the event this product is found to be defective within the warranty period, LaCie will, at its discretion, repair or replace the defective product.

This warranty is void if:

- The product was operated/stored in abnormal use or maintenance conditions;
- The product is repaired, modified or altered, unless LaCie expressly authorizes such repair, modification or alteration in writing;
- The product was subjected to abuse, neglect, electrical fault, improper packaging, accident or acts of nature;
- The product was installed improperly;
- The serial number of the product is defaced or missing;
- The broken part is a replacement part such as a pickup tray, etc.
- The tamper seal on the casing is broken.

See the User Manual (located on the Utilities DVD-ROM) for more information.

For the latest documentation and software updates, please visit:
<http://www.lacie.com/us/support/drivers/index.htm?id=10008>

Contact Us

LaCie USA

22985 NW Evergreen Pkwy
Hillsboro, OR 97124
sales@lacie.com

LaCie France

17, rue Ampère
91349 Massy Cedex
sales.fr@lacie.com

LaCie Asia Limited

25/F Winsan Tower
98 Thomson Road
Wanchai, Hong-Kong
sales.asia@lacie.com

LaCie Australia

458 Gardeners Rd.
Alexandria, NSW 2015
sales.au@lacie.com

LaCie Belgium

Vorstlaan 165/ Bld
du Souverain 165
1160 Brussels
sales.benelux@lacie.com

LaCie Canada

235 Dufferin St.
Toronto, Ontario M6K 1Z5
sales.ca@lacie.com

LaCie Germany

Am Kesselhaus 5
D-79576 Weil Am Rhein
sales.de@lacie.com

LaCie Srl

Milano Business Park
Edificio B1
Via dei Missaglia 97
20142 Milano
sales.it@lacie.com

LaCie Japan K.K.

Uruma Kowa Bldg. 6F
8-11-37 Akasaka, Minato-ku
Tokyo 107-0052
sales.jp@lacie.com

LaCie Netherlands

Postbus 134
3480 DC Harmelen
sales.benelux@lacie.com

LaCie Middle East FZE

LIU-E6, PO Box 293860,
Dubai Airport Free Zone,
Dubai, U.A.E.
sales.me@lacie.com

LaCie Nordic

(Sweden, Denmark, Norway, Finland)
Sveavägen 90, 5tr
113 59 Stockholm, Sweden
sales.nordic@lacie.com

LaCie Spain

C/ Núñez Morgado, 3, 5ª pl.
28036 Madrid
sales.es@lacie.com

LaCie Switzerland

Dauidsbodenstrasse 15 A
4004 Basel
sales.ch@lacie.com

LaCie United Kingdom and Ireland

LaCie LTD - Friendly House
52-58 Tabernacle Street
London, England EC2A 4NJ
UK: sales.uk@lacie.com
Ireland: sales.ie@lacie.com

LaCie Worldwide Export

17, rue Ampère
91349 Massy Cedex, France
sales.intl@lacie.com
support.intl@lacie.com

Visit www.lacie.com for more
information on LaCie products.

